

Fig.	Description	ALCO Part No.	Price Each
1	Crossbrace without Hardware, 20", Left (for 18" chair depth)	AL-64998	Call
	Crossbrace without Hardware, 20", Right (for 18" chair depth)	AL-64999	Call
	Crossbrace without Hardware, 22", Left (for 18" chair depth)	AL-65000	Call
	Crossbrace without Hardware, 22", Right (for 18" chair depth)	AL-65001	Call
	Crossbrace without Hardware, 24", Left (for 18" chair depth)	AL-65002	Call
	Crossbrace without Hardware, 24", Right (for 18" chair depth)	AL-65003	Call
	Crossbrace without Hardware, 26", Left (for 18" chair depth)	AL-65004	Call
	Crossbrace without Hardware, 26", Right (for 18" chair depth)	AL-65005	Call
	Crossbrace without Hardware, 28", Left (for 18" chair depth)	AL-65006	Call
	Crossbrace without Hardware, 28", Right (for 18" chair depth)	AL-65007	Call
	Crossbrace without Hardware, 30", Left (for 18" chair depth)	AL-65008	Call
	Crossbrace without Hardware, 30", Right (for 18" chair depth)	AL-65009	Call
3	Plug Button (7/8")	AL-231B	\$0.95
4	Screw, Button Head Cap	AL-64579	\$8.95
5	Link (Black), 20" Wide	AL-65011	\$59.95
	Link (Black), 22" Wide	AL-65012	\$59.95
	Link (Black), 24" Wide	AL-65013	\$59.95
	Link (Black), 26" Wide	AL-65014	\$59.95
	Link (Black), 28" Wide	AL-65015	\$59.95
	Link (Black), 30" Wide	AL-65016	\$59.95
6	Locknut	AL-2209	\$7.95
7	Screw, Hex Head Cap	AL-45874	\$7.95
8	Bracket, Pivot	AL-65017	\$7.95
9, 13	Locknut	AL-53240	\$8.95
10	Clamp, Saddle	AL-64624	\$8.95
12	H-Block	AL-64619	\$1.95
14	Plug Button, Black	AL-2295B	\$0.95
15	Screw, Hex Head Cap	AL-64633	\$8.95
16	Frame w/Bearings, Rivet & Lock Handles, Left	AL-65020	Call
	Frame w/Bearings, Rivet & Lock Handles, Right	AL-65021	Call
	Frame w/Bearings, Rivet & Lock Handles, Left	AL-65022	Call
	Frame w/Bearings, Rivet & Lock Handles, Right	AL-65023	Call

Back Canes & Hardware (9000 Topaz)

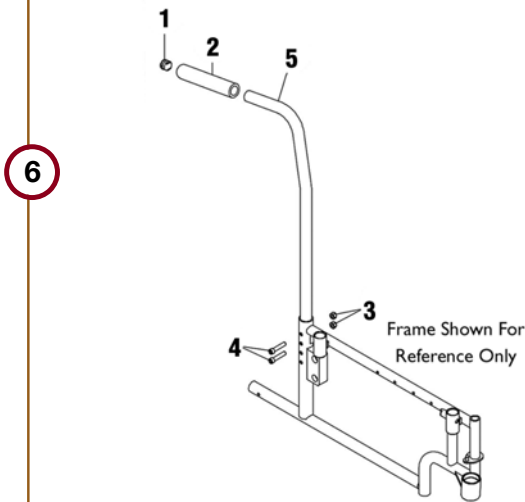


Fig.	Description	ALCO Part No.	Price Each
1	Plug Button	AL-231B	\$0.95
2	Grip, Foam Tubular (Black)	AL-65025	\$15.95
3	Locknut	AL-65026	\$7.95
4	Screw, Socket Head Cap	AL-45828	\$7.95
5	Back Cane	AL-65027	Call
6	Hardware, Back Cane	AL-72382	\$39.95

Fixed Height Arm (9000 Topaz)

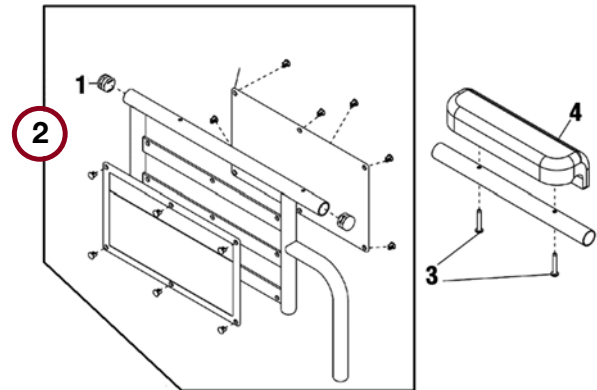


Fig.	Description	ALCO Part No.	Price Each
1	Plug Button	AL-231B	\$0.95
2	Armrest Base Assembly, Full Length, Color1 (specify left or right)	AL-65031	\$89.95
	Armrest Base Assembly, Desk Length, Color1 (specify left or right)	AL-65033	\$89.95
3	Hardware, Armpad (Pair)	AL-65034	\$7.95
4	Armpad, Desk Length, Urethane Waterfall w/Screws	AL-65038	\$33.95
	Armpad, Full Length, Urethane Waterfall w/Screws	AL-65039	\$33.95

1Specify Frame Color: Silver Vein or Wet Black

Adjustable Height Arm (9000 Topaz)

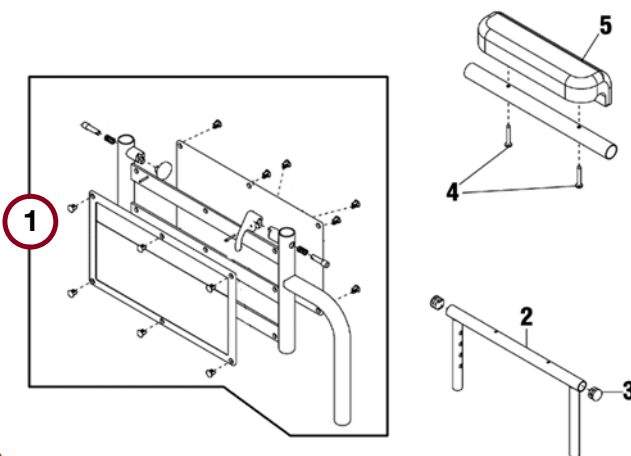
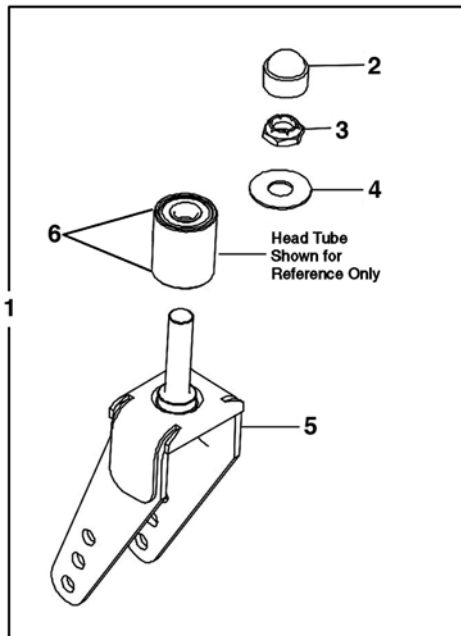


Fig.	Description	ALCO Part No.	Price Each
1	Armrest Base Assembly, Left	AL-65049	\$99.95
	Armrest Base Assembly, Right	AL-65050	\$99.95
2	Armrest, Adjustable Top w/Plug Buttons, Full Length ¹	AL-65053	\$44.95
	Armrest, Adjustable Top w/Plug Buttons, Desk Length ¹	AL-65054	\$44.95
3	Plug Button	AL-231B	\$0.95
4	Hardware, Armpad (Pair)	AL-65034	\$7.95
5	Armpad, Desk Length, Urethane Waterfall w/Screws	AL-65038	\$33.95
	Armpad, Full Length, Urethane Waterfall w/Screws	AL-65039	\$33.95

When Ordering, Specify Left (L) or Right (R)—Sitting in Chair



When Ordering, Specify
Left (L) or Right (R)
Sitting in Chair

Fig.	Description	ALCO Part No.	Price Each
Forks & Hardware (9000 Topaz)			
1	Fork Assembly, 6" (Includes Items 2-5)	AL-65065	\$51.95
	Fork Assembly, 8" (Includes Items 2-5)	AL-65066	\$51.95
2	Headtube Cap	AL-65067	\$7.95
3	Locknut	AL-64676	\$1.95
4	Washer	AL-65068	\$7.95
5	Fork (Black Only), 6"	AL-65069	\$51.95
	Fork (Black Only), 8"	AL-65070	\$51.95
6	Bearing (5/8")	AL-2228	\$4.95

Fig.	Description	ALCO Part No.	Price Each
Front Casters & Hardware (9000 Topaz)			
7	Wheel Assembly, Composite Semi-Pneumatic (8" x 1-3/4"), 1 Piece	AL-45629	\$39.95
8	Bearing	AL-259F	\$3.95
9	Bearing Spacer	AL-50837	\$8.95
10	Axle Washer	AL-65071	\$8.95
11	Front Axle with Locknut	AL-1406	\$3.95

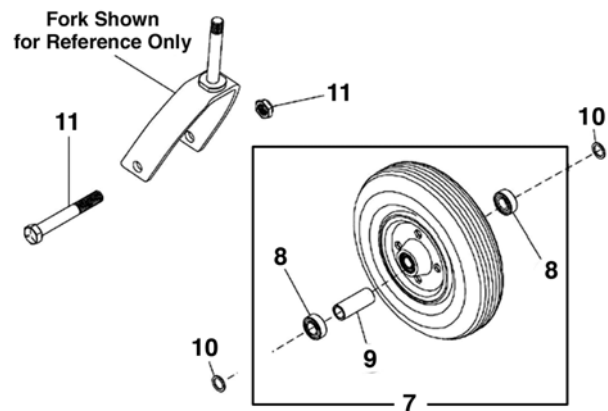
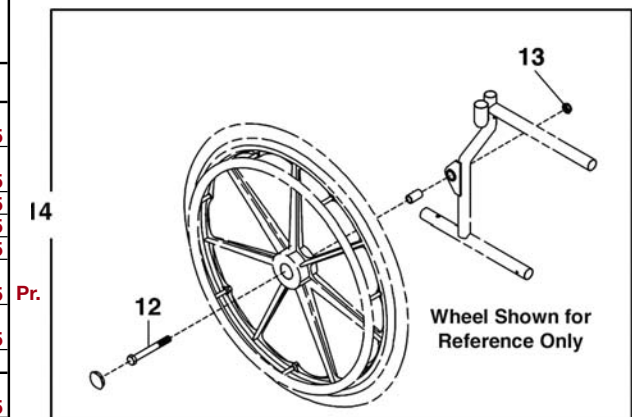
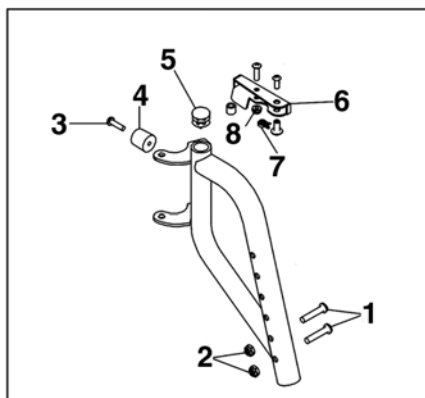
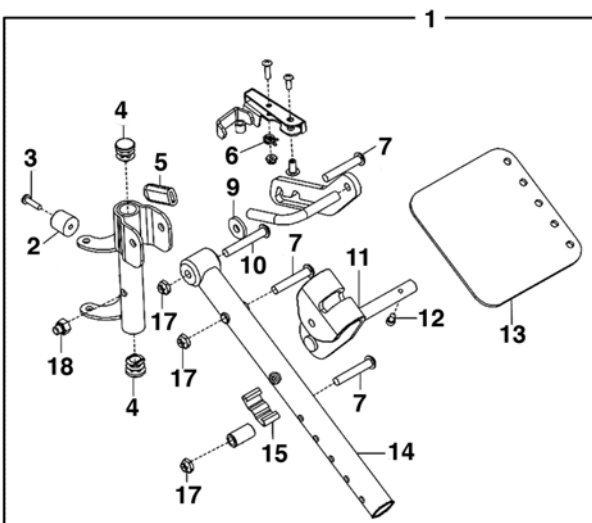


Fig.	Description	ALCO Part No.	Price Each
Rear Wheel & Hardware (9000 Topaz)			
N/S	Hardware Kit, 24" Rear Wheel (Includes Items 2-4)	AL-65072	\$12.95
	Hardware, 20" Pneumatic Flat Free Tire (Includes Items 2-4)	AL-65073	\$7.95
12	Screw, Hex Head for 24" Wheel	AL-65074	\$7.95
	Bolt, Axle for 20" Wheel	AL-65075	\$7.95
13	Locknut	AL-64676	\$1.95
14	Rear Wheel, Heavy Duty Spoke Solid Rubber (24") (Pair)	AL-65453	\$319.95
	Rear Wheel, Heavy Duty Composite Pneumatic w/Flat Free Insert (20")	AL-65454	\$239.95
Wheel Lock, Chrome Chairs (before 9/1/05)			
15	Wheel Lock Assembly, Adult (Push To Lock), Left	AL-45575	\$13.95
	Wheel Lock Assembly, Adult (Push To Lock), Right	AL-45574	\$13.95
	Brake Tip	AL-45566	\$1.95
Wheel Lock, Disk Style (between 8/15/03-8/31/05)			
16	Wheel Lock, Push To Lock, Left	AL-64663	\$49.95
	Wheel Lock, Push To Lock, Right	AL-64664	\$49.95
	Brake Tip	AL-64667	\$10.95
Wheel Lock, High Mount (after 9/1/05)			
17	Wheel Lock, Push To Lock, Left	AL-77655	\$49.95
	Wheel Lock, Push To Lock, Right	AL-77656	\$49.95
	Brake Tip	AL-45566	\$1.95
Wheel Lock, Clamp On (after 9/1/05)			
	Wheel Lock, Pull To Lock, Right	AL-81657	\$49.95
	Wheel Lock, Pull To Lock, Left	AL-81658	\$49.95
	Brake Tip	AL-45566	\$1.95



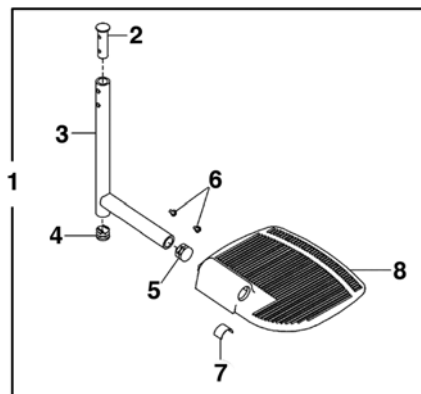


9000 Topaz by Invacare



Footrest, Upper Support —TZ343A (9000 Topaz)

Fig.	Description	ALCO Part No	Price Each
	Legrest Complete—Color Black	AL-58138-U67	\$209.00
	Legrest Complete—Color Blue	AL-58138-U550	\$209.00
1	Upper Support, Left (Includes Items 2-25)	AL-65081	\$189.95
	Upper Support, Right (Includes Items 2-25)	AL-65082	\$189.95
2	Bumper	AL-58587	\$7.95
3	Screw, Phillips Pan Head Tap	AL-58588	\$8.95
4	Plug Button (3/4")	AL-2295B	\$0.95
5	Tip, Black, Plastic	AL-373B	\$1.45
6	Spring, Release, Left	AL-45692	\$8.95
	Spring, Release, Right	AL-45691	\$8.95
7	Screw Truss Head	AL-65092	\$7.95
9	Washer, Nylon	AL-64583	\$8.95
10	Screw Slot Truss Head	AL-65096	\$7.95
11	Bracket, Calf Pad Mounting	AL-65097	\$32.95
12	Screw Socket Button Head	AL-65098	\$7.95
13	Plate, Calf Pad Mounting	AL-65099	\$29.95
14	Elevating Support Tube, Left, Chrome	AL-65100	\$42.95
	Elevating Support Tube, Right, Chrome	AL-65101	\$42.95
15	Spring, Leaf	AL-976A	\$5.95
17	Locknut	AL-2209	\$7.95
18	Nut, Cap	AL-65103	\$6.95
N/S	Calf Pad, Left or Right (specify color)	AL-422UBK	\$15.95
N/S	Calf Pad, Hardware	AL-45502	\$0.44



Footrest, Upper Support —TZ33A (9000 Topaz)

Fig.	Description	ALCO Part No.	Price Each
	Footrest Complete (Pair)	AL-58137	\$99.00
1	Screw, Button Head Socket	AL-65108	\$8.95
2	Locknut	AL-53240	\$8.95
3	Screw Phillips Pan Head Tap	AL-58588	\$8.95
4	Bumper	AL-58587	\$7.95
5	Plug Button (3/4")	AL-2295B	\$0.95
6	Handle, Release (Black), Left	AL-65112	\$12.95
	Handle, Release (Black), Right	AL-65113	\$12.95
7	Spring, Release, Left	AL-45692	\$8.95
	Spring, Release, Right	AL-45691	\$8.95
8	Locknut for Chrome Frame Finishes	AL-59860	\$8.95

Pivot Slide Tube w/Footplate —TZ33A & TZ34A (9000 Topaz)

Fig.	Description	ALCO Part No.	Price Each
1	Pivot Slide Tube w/Footplate Assembly, Left (Includes Items 2-8)	AL-65114	\$109.95
	Pivot Slide Tube w/Footplate Assembly, Right (Includes Items 2-8)	AL-65115	\$109.95
2	Insert, Support, Legrest	AL-65116	\$7.95
3	Pivot Slide Tube (Black Only)	AL-65117	\$25.95
	Pivot Slide Tube (Chrome)	AL-65118	\$44.95
4	Plug Button (3/4")	AL-2295B	\$0.95
5	Plug Button (7/8")	AL-231B	\$0.95
6	Screw, Phillips Pan Head	AL-2196	\$7.95
7	Spring, Leaf	AL-65119	\$10.95
8	Footplate Extra Large, Left, Aluminum	AL-65120	\$59.95
	Footplate Extra Large, Right, Aluminum	AL-65121	\$59.95

When Ordering, Specify Left (L) or Right (R)—Sitting in Chair