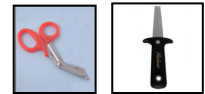
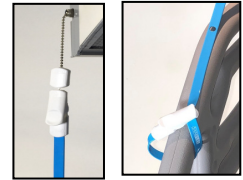


### Sanipull Bulk Premium Kit

Sanipull Bulk Premium Kit : DIY bulk, cut any length, assemble on site (all fittings included)

Kit comes with Sanipull ribbon, Sanipull release ball chain or clamshell adapters, durable Universal Sanipull clips or handles.  
Two cord length options are available (300 or 900 ft.)

AL#	Product Description
<b>Bedside Nurse Call Kit</b>	
<b>AL-88365A</b>	Sanipull standard blue ribbon, Sanipull release ball chain adapters and Universal Sanipull clips (300 or 900 ft cord length)
<b>AL-88365C</b>	Sanipull anti-ligature blue ribbon, Sanipull release ball chain adapters and Universal SuperSanipull clips (300 or 900 ft cord length)
<b>Overbed Light Kit</b>	
<b>AL-88366A</b>	Sanipull standard red ribbon, Sanipull clamshell adapters and Universal SuperSanipull clips (300 or 900 ft cord length)
<b>AL-88366C</b>	Sanipull anti-ligature red ribbon, Sanipull clamshell adapters and Universal SuperSanipull clips (300 or 900 ft cord length)
<b>AL-88783</b>	Bag of 10 Sanipull Release Ball Chain Adapters. Securely connects to fixture switch ball chain. Sanipull adapter clip attaches to the ball end
<b>Washroom Nurse Call Kit (Open Handle)</b>	
<b>AL-88367A</b>	Sanipull standard red ribbon, Sanipull clamshell adapters and Open Grasp Handles (300 or 900 ft cord length)
<b>AL-88367C</b>	Sanipull anti-ligature red ribbon, 50 Sanipull clamshell adapters and Open Grasp Handles (300 or 900 ft cord length)
<b>Washroom Nurse Call Kit (Closed Handle)</b>	
<b>AL-88368A</b>	Sanipull standard red ribbon, Sanipull clamshell adapters and Closed Grasp Handles (300 or 900 ft cord length)
<b>AL-88368C</b>	Sanipull anti-ligature red ribbon, Sanipull clamshell adapters and Closed Grasp Handles (300 or 900 ft cord length)



#### Tools to Assist Installation:

Scissors: Serrated edge bandage scissors to cut ribbon

Sanipull Fitting: Included in Kit

Pry Blade: Fine profile blade that makes opening a clip or adapter clamshell door a snap

#### Important Product Notes

<sup>1</sup>Sanipull spring clip attached onto ball chain adapter provides consistent and reliable 13 +/- 1 lbs (5 +/- 0.5 kg) overforce pull protection for over bed light fixtures. Simply re-attach for ongoing switch protection. If the user-end of the ribbon is attached onto linen or looped around bed rail with the clip snapped onto the ribbon, the clip will harmlessly release if the safety rail is lowered or the bed is moved.

<sup>2</sup>Sanipull anti-ligature ribbon (symbol, PER) option helps mitigate the risk of entanglement or strangulation with a proprietary safety breakaway designed to tear apart at 29 +/- 2 lbs (13 +/- 1 kg) force at 74 °F (23 °C). Anti-ligature ribbon is factory modified with nominal 5/16" diameter holes punched every 6-7 inches along its length. Because of the nature of this ribbon modification, warranty extends only to the attachment fittings.

**Note:** ALCO Sales & Service Co. will not be held liable for death or damages directly or indirectly involving any Sanipull product.

Sanipull is a durable solution that can be repaired by replacing damaged components. ALCO Sales & Service Co. offers a 100% end user satisfaction guarantee and a lifetime replacement warranty on SuperSanipull fittings if correctly installed.